

LGBTQ Center at UNC





Since 2003:

The Lesbian, Gay, Bisexual, Transgender, and Queer (LGBTQ) Center works to foster a welcoming and inclusive environment for UNC-Chapel Hill community members of all sexual orientations, gender identities, and gender expressions.

LOCATION??


385 Manning Dr. SASB South
Suite 3308 Chapel Hill, NC
27714





WHAT DOES THE CENTER DO?

- **Provide a physical, safe space for people to gather and create connections**
- **Serve as a hub for campus, local and LGBTQ+ resources for all students, staff and faculty**
- **Build community through events, programs & festivals**
- **Lead presentations, trainings and continuing education courses for the campus community**
- **Cultivate relationships with larger community through partnerships with local businesses**

- 
- Educational Programs
1. Safe Zone/Cont. Edu
 2. Presentations
 3. Healthy Relationships

- Direct Support & Advocacy
1. 1:1 Meetings
 2. Trans Talk Space
 3. Committee Work

Community Events

1. NCOD
2. Lavender Graduation
3. Club Soda/Ambassadors

ELEMENTS OF IDENTITY

Sexual Orientation

Gender Identity

Gender Expression



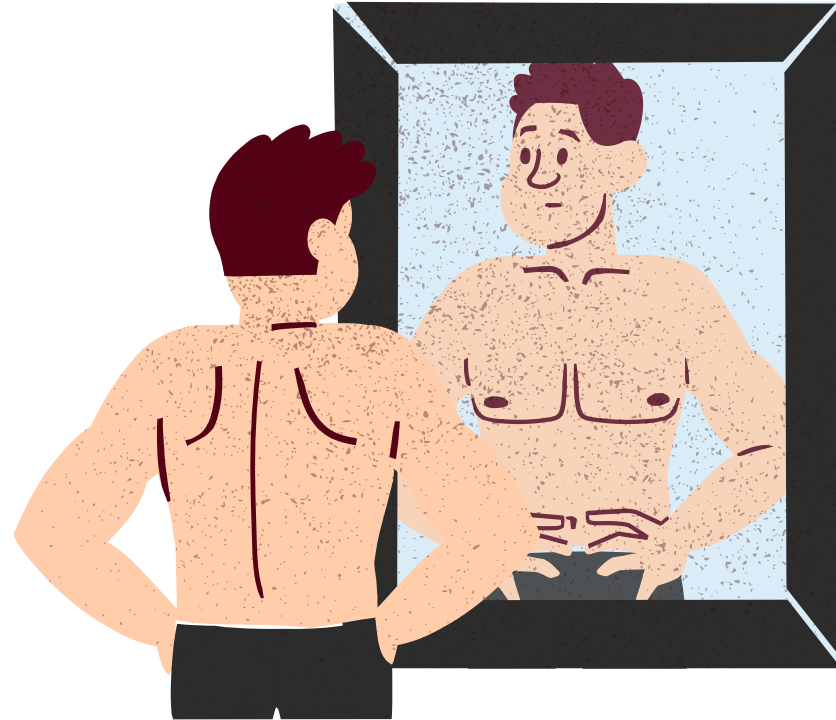
SEXUAL ORIENTATION

How someone identifies their sexual feelings and desires, or describes who they are open to having a sexual relationship with.



GENDER IDENTITY

One's innermost concept of "self," or how individuals see and refer to themselves regardless of what gender they were assigned at birth.



GENDER EXPRESSION

Someone's external appearance. Includes physical traits, behavior, hairstyle, and clothing. It can also include names and pronouns.





Why do LGBT Students Join Fraternities/Sororities?

- **Friendship/Camaraderie**
- **Support Group**
- **Sense of Belonging**
- **Social Activities**
- **Leadership Opportunities**



Who are LGBT Identifying Fraternity/Sorority Members??

- **VISIBILITY**

- Students still developing sexual identity
- Students don't disclose sexual orientation to fellow members

- **IDENTITY**

- Perceived Fluidity of sexual identity in college-aged students
- Criteria for classifying an individual as LGBT

- **KNOWLEDGE/EXPOSURE**

- Connection or engagement with LGBT Culture/community

THE LGBT VIBE??

- What are our thoughts, perceptions of...
- What words language do we use when we talk about...
- Are our Social activities/events open to...
- Do we participate in trainings/education
- Do we review policies, by-laws, etc.. For inclusivity



STRATEGIES FOR ALLYSHIP

- Use inclusive, non-gender specific language
- Talk with and learn from LGBT friends
- Invite LGBT people, groups to social events and other activities
- Correct misinformation, myths, misperceptions about LGBT people when you hear it...
- Wear/display ally buttons, posters or stickers
- Attend Safe Zone training
- Use inclusive language in conversation
- Do not Assume Heterosexuality/Cisgender in others
- Educate yourself on LGBT challenges/barriers



STRATEGIES FOR ALLYSHIP

- Attend/Support LGBT events and activities, parades, festivals, PRIDE Week
- Know LGBT resources on/off campus for LGBT members
- Understand/examine your own culture, socialization, and possibility of prejudices, biases towards LGBT Community
- Educate yourself on LGBT student Challenges/ Barriers
- Realize you DON'T have to know all the answers/you DON'T have to "fix" everything..



RESOURCES

- **LGBTQ Center/Allied Agencies**
 - LGBTQ Centers (UNC, Durham, Raleigh, Cary)
 - El Centro, LILA, El Futuro, Latin-19, Durham Coalition
 - Transgender Health Program (UNC)
 - SAGA, Chapel Heelz, Pearl Hacks, OSTEM
 - LGBTQ Center UNC Newsletters/Listservs
- **Mental Health**
 - Intersections: A QTPOC Support Wed's 3p-4:30p
 - In Out & In Between: A Gender & Sexuality Spectrum Group Tues: 2:30p
- **Events/Program**
 - PRIDE Week, Lavender Graduation, QFF

